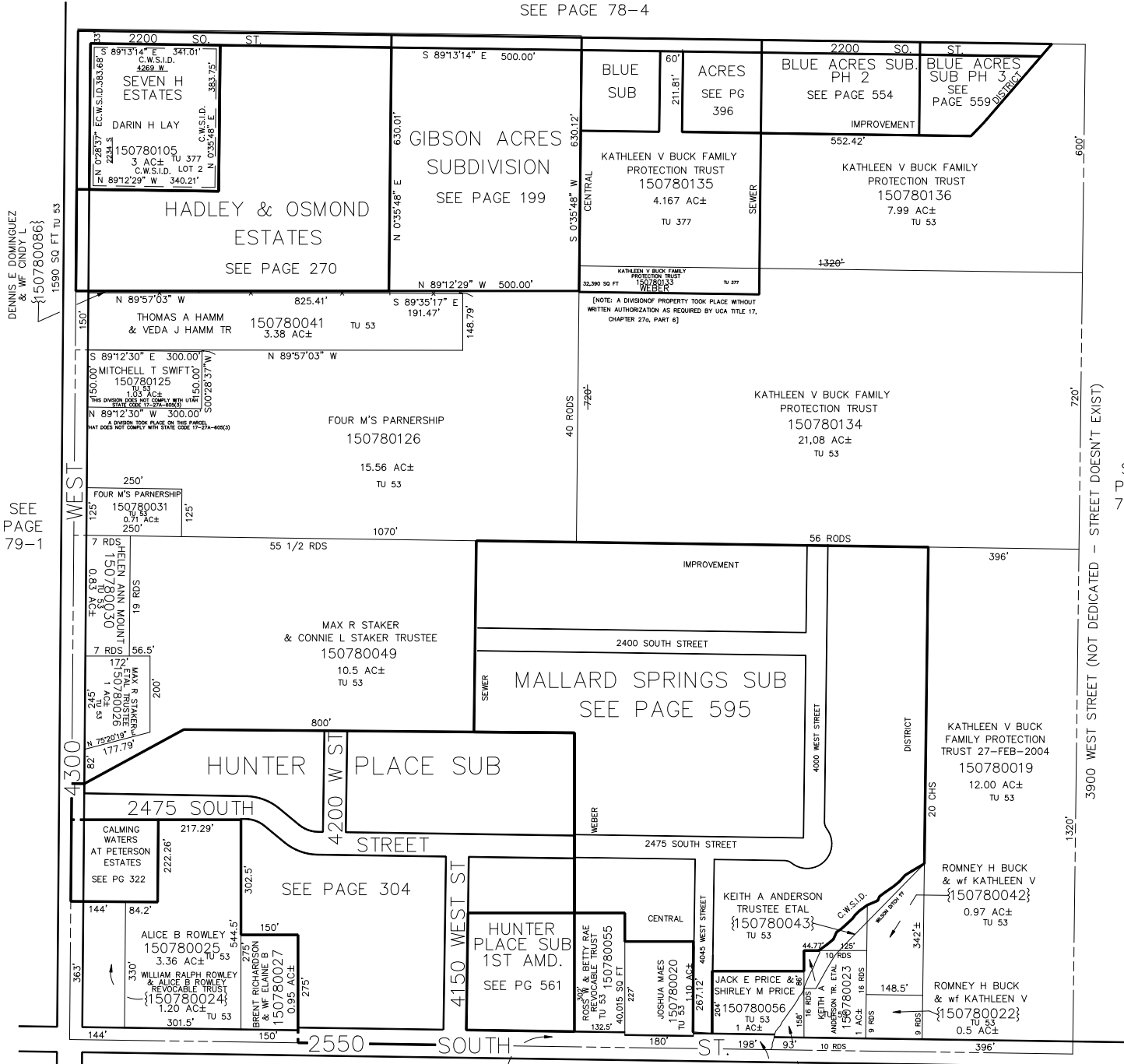


S.W. 1/4  
SECTION 28, T.6N., R.2W., S.L.B. & M.

IN WEBER COUNTY  
SCALE 1" = 200'

TAXING UNIT: 53, 377

SEE PAGE 78-4



DENNIS E DOMINGUEZ & WF CINDY L {150780086}

SEE PAGE 79-1

SEE PAGE 78-2

3900 WEST STREET (NOT DEDICATED - STREET DOESN'T EXIST)

SEE PAGE 90-1

WEBER COUNTY {150780038} WEBER COUNTY {150780054} SEE PAGE 91

{150780043}